

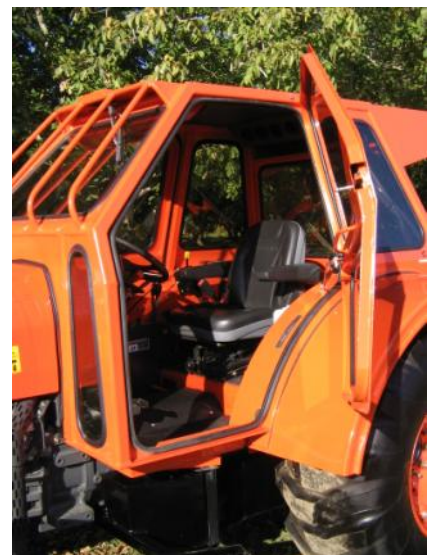


ORCHARD CAB®

CLIMATE CONTROLLED PROTECTIVE ENCLOSURE

Comfort · Protection · Production!

- ROPS certified Roll-over Structure
- Air Conditioning, 3-speed, standard
- Filtered air with cab pressurization
- Two large entry/exit doors
- Spacious interior
- Crop-sensitive angled shape
- Full Fenders cover rear tire tread
- Heater option, 3-speed
- Designed to many current Tractor models





ORCHARD CAB®

CLIMATE CONTROLLED PROTECTIVE ENCLOSURE

The Nelson ORCHARD CAB® is a state-of-the-art protective enclosure that enables you to convert your tractor into a climate controlled environment. Backed by over 30 years of on-going research, testing and development, Nelson Mfg. builds the ORCHARD CAB® with maximum operator comfort in mind. Whether you're mowing, spraying or harvesting, you'll be comfortable and refreshed, a must for maximum productivity.

ROPS CERTIFIED*

Strength and durability are built into every unit from the 2" x 2" x 1/4" wall frame tubing to the 1" thick axle mounts. The ORCHARD CAB® is ROPS certified* and may be used where standard Roll-Over Structures are not practical. The high quality enamel finish provides long lasting protection.

UNIQUE FILTER SYSTEM**

To extend the life and effectiveness of the filter, fresh air is drawn from the front of the cab, the cleanest location and a must for dusty or wet conditions. Air then passes through the Donaldson® air filter that removes most particulates and minimizes dust inside the cab. An activated carbon filter is offered as an option to help remove contaminants in vapor form.**

PRESSURIZED CABIN**

The Nelson ORCHARD CAB® offers you a patented, state-of-the-art, pressurized system that creates a controlled environment for the tractor operator. Filtered air is forced into the cabin, using a dedicated blower, creating positive pressure inside the cab.** By operating the filter/pressure blower independently from the A/C fan maximum air volume is ensured for the inside A/C unit.

REFRESHING ATMOSPHERE

Best Operator production is maintained, thanks to standard Air Conditioning with every ORCHARD CAB®. Very cold performance is achieved with the use of the quiet Red Dot® brand A/C unit and engine-mounted tractor-factory A/C components. Inside air is re-circulated through the evaporator providing the most refreshing atmosphere possible. Temperature control and 3-speed blower allow for operator preference. Tinted safety glass further helps to block heat from the sun.

COMFORTABLE INTERIOR

The design also features a spacious interior that further adds to operator comfort and affords plenty of room for machine controls. Noise is minimized by the sound absorbing acoustical interior and insulation between tractor and cab. Two large doors open at the front allowing quick and easy entry and exit from the cab. The hinged access panel simplifies set-up of sprayer controls inside the cab.

EXCELLENT VISIBILITY

Visibility is excellent all-around with the large windshield, side windows and rear glass. Additional windows provide a view of the front tires as well as the 3-point area. The Nelson ORCHARD CAB® includes wipers and washers at both front and rear windows for the best possible visibility while spraying or working in dusty conditions.

YEAR-ROUND USABILITY

The Nelson ORCHARD CAB® eliminates cold, wet conditions by sheltering the operator in a warm, dry environment, totally eliminating the need for conventional raingear. The optional 3-speed Heater provides ultimate adjustment to achieve the perfect temperature on those really cold nights.

CROP SENSITIVE DESIGN

The very shape of the Nelson ORCHARD CAB® is functional. Unlike bulky conventional cabs, the angled cab front, sides and the standard Full Fenders (covering rear tires front & top) provide smooth, clean styling that protects even the most sensitive crops.

COMMITTED TO EXCELLENCE

Combining over 30 years of experience, superior design, quality construction and durability, the Nelson ORCHARD CAB® sets the standard and has become the first choice of uncompromising growers as well as professional applicators.

TRACTOR REQUIREMENTS:

-Fits most current Low Profile orchard tractors.***

STANDARD EQUIPMENT:

- Donaldson® Air Filter
- Red Dot® Air Conditioning, 3-speed
- 2 wide entry Doors with locks (R&L)
- Hinged Access Door for sprayer controls
- Wipers & Washers, front & rear
- Interior Dome Light
- Safety glass, 1/4" laminated, tinted
- Mounting Fenders, full width over tire tread

OPTIONS:

- Heater with Temp. control, 3-speed
- Activated Carbon Filter
- Stainless sheet metal

SPECIFICATIONS:

- Height: Approx. 60" from top of rear tractor axle to top of Cab. 76" to 84" ground to top depending on Tractor model and tire size.
- Width: Model specific: 49" to 55" where cab attaches to fenders. 32" to 34" at top.
- Weight: Approximately 1,000 lbs. including fenders.

*Cab conforms to requirements of OSHA Reg. 1928-C, SAE J1194 JUL83 and ASAE S383.1 spraying dangerous chemicals. ***Tractor models change often. Please call for current list.

**Operator MUST wear Personal Protective Equipment (PPE) in an enclosed cab while

Designed and built by:

NELSON MFG. CO., INC.
2860 Colusa Hwy.
Yuba City, CA 95993
Toll Free: 1-877-673-0919
Fax: (530) 673-2072
Email: info@nelsonhardie.com
www.NelsonHardie.com

